

T-Brushless micromotor



Compact size, reliability, silent running and versatility are just some of the key features of these brushless micromotors. Brushless technology enables these devices to reach high speeds with minimal noise, vibration and heat dissipation. An electronic microprocessor control system constantly monitors motor speed and guarantees consistent high torque. Speed can also be adjusted manually or from a foot or knee control.



Simple and intuitive control panel with auto-cruise function. Speed can be controlled from the benchtop unit or from a foot or knee control. Fixed speed can be maintained without any manual intervention. Speed is shown on the display.



A perfectly balanced handpiece guarantees a relaxed and natural working grip. Maintenance is superbly easy thanks to an easy to clean spindle and quick to replace bearings.



The control unit can even be wall-mounted thanks to the bracket supplied as standard equipment.

Data sheet



Standard equipment:

- Control unit
- MX950 micromotor handpiece
- Handpiece base
- Wall mounting bracket
- Foot control

| Product code | MM303 |
|-------------------------|--------------------------|
| Micromotor | Brushless |
| Maximum speed | 50,000 rpm |
| Control type | Benchtop Foot Knee |
| Reverse | ● |
| Power | 230 W |
| Torque | 10 Ncm |
| Power supply | 220 V - 50 Hz |
| Control unit dimensions | 100x280x230mm |
| Control unit weight | 2.75 kg |

T-Brush micromotors



The micromotor is the most frequently used item of equipment in any laboratory. Micromotors are needed all day, every day. Selection criteria, however, depend largely on working habits: some technicians prefer control units offering manual controls, while others prefer versions with foot controls. Tecnomed's micromotor handpieces are ergonomically designed and offer a perfect balance, not only of the handpiece alone but of the complete handpiece and cord system. Because they do not pull on your wrist, your working position can be more relaxed and natural and you can concentrate better on the intricate, complex and time-consuming tasks you often have to perform. Maintenance is effortless too, thanks to an easy to clean spindle and quick to replace bearings. Excellent speed control, mechanical robustness and ergonomic design are just some of the key features of these handpieces. The choice is yours!



Standard equipment:

- Control unit
- MX900 micromotor handpiece
- Handpiece base

| Product code | MM10RS |
|-------------------------|--------------------|
| Micromotor | Brush |
| Maximum speed | 30.000 rpm |
| Control type | Foot |
| Reverse | No |
| Power | 100 Watt |
| Torque | 4,0 N.cm |
| Power supply | 220V-50Hz |
| Control unit dimensions | 187 x 127 x 190 mm |
| Control unit weight | 2,71 Kg |



Standard equipment:

- Control unit
- MX900 micromotor handpiece
- Handpiece base
- Foot control

| Product code | MM15RN |
|-------------------------|-------------------|
| Micromotor | Brush |
| Maximum speed | 35,000 rpm |
| Control type | Benchtop |
| Reverse | • |
| Power | 100 Watt |
| Torque | 3,5 N.cm |
| Power supply | 220V-50Hz |
| Control unit dimensions | 115 x 153 x 77 mm |
| Control unit weight | 1,5 Kg |



Standard equipment:

- Control unit
- 2 MX940 micromotor handpieces
- Handpiece base
- Foot control

| Product code | MM16R |
|-------------------------|-------------------|
| 2 micromotors | Brush |
| Maximum speed | 40,000 rpm |
| Control type | Benchtop / Foot |
| Reverse | • |
| Power | 100 Watt |
| Torque | 4,2 N.cm |
| Power supply | 220V-50Hz |
| Control unit dimensions | 145 x 175 x 85 mm |
| Control unit weight | 2,75 Kg |

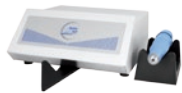





Standard equipment:





- Control unit
- MX900 micromotor handpiece
- Handpiece base
- Foot control

| Product code | MM17R |
|-------------------------|-------------------|
| Micromotor | Brush |
| Maximum speed | 35,000 rpm |
| Control type | Benchtop / Foot |
| Reverse | • |
| Power | 100 Watt |
| Torque | 3,5 N.cm |
| Power supply | 220V-50Hz |
| Control unit dimensions | 115 x 153 x 77 mm |
| Control unit weight | 1,5 Kg |

Comparative data sheet

| | MM10RS | MM15RN | MM16R | MM17R | MM303 |
|-------------------------------------|---|---|--|---|---|
| Product code |  |  |  |  |  |
| Micromotor handpiece | MX900 brush | MX900 brush | 2 x MX940 brush | MX900 brush | MX950 brushless |
| Rotation speed | 30,000 rpm | 35,000 rpm | 40,000 rpm | 35,000 rpm | 50,000 rpm |
| Control type | Foot | Benchtop | Benchtop / Foot | Benchtop / Foot | Benchtop / Foot / Knee |
| Reverse | No | ● | ● | ● | ● |
| Power | 100 Watt | 100 Watt | 100 Watt | 100 Watt | 230 Watt |
| Torque | 4,0 N.cm | 3,5 N.cm | 4,2 N.cm | 3,5 N.cm | 10 N.cm |
| Speed indicator | No | Analog | Analog | Analog | Digital |
| Overload protection | ● | ● | ● | ● | ● |
| Power supply | 220V-50Hz | 220V-50Hz | 220V-50Hz | 220V-50Hz | 220V-50Hz |
| Handpiece length | 154,5 mm | 154,5 mm | 154,5 mm | 154,5 mm | 162 mm |
| Handpiece diameter | 29,4 mm | 29,4 mm | 29,4 mm | 29,4 mm | 26 mm |
| Handpiece weight | 240 gr | 240 gr | 282 gr | 240 gr | 358 gr |
| Bur diameter | 2,35 mm | 2,35 mm | 2,35 mm | 2,35 mm | 2,35 mm |
| Control unit weight | 2,71 Kg | 1,5 Kg | 2,75 Kg | 1,5 Kg | 2,75 Kg |
| Control unit dimensions (w x l x h) | 187 x 127 x 190 mm | 115 x 153 x 77 mm | 145 x 175 x 85 mm | 115 x 153 x 77 mm | 100 x 280 x 230 mm |
| Warranty | 12 months | 12 months | 12 months | 12 months | 12 months |
| Certificazione | CE | CE | CE | CE | CE |

Bur data sheet

| | Speed 40,000 rpm | Speed 30,000 rpm | Speed 20,000 rpm | Speed 10,000 rpm |
|----------------|---|---|---|---|
| Bur dimensions | Ø less than 4 mm | Ø less than 8 mm | Ø less than 18 mm | Ø less than 28 mm |
| |  |  |  |  |

Micromotor handpieces



Tecnomed's micromotor handpieces are ergonomically designed and offer a perfect balance, not only of the handpiece alone but of the complete handpiece and cord system. Because they do not pull on your wrist, your working position can be more relaxed and natural and you can concentrate better on the intricate, complex and time-consuming tasks you often have to perform. Maintenance is effortless too, thanks to an easy to clean spindle and quick to replace bearings. Excellent speed control, mechanical robustness and ergonomic design are just some of the key features of these handpieces. They are also fully interchangeable and can be used with any dental unit that provides the right output voltage. The choice is yours!

Data sheet



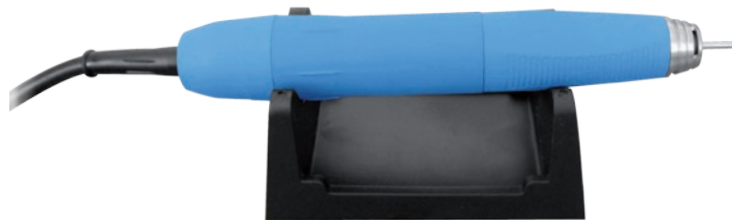
Compatible with Sirio®, Silfradent®, Mariotti®, NSK®, Seashin® and Marathon®* control units.

| Product code | MX900 |
|----------------------|--------------|
| Micromotor handpiece | Brush |
| Maximum speed | 35.000 rpm |
| Power supply | 0-30 VDC |
| Handpiece length | 154,5 mm |
| Handpiece diameter | 29,4 mm |
| Handpiece weight | 240 gr |
| Bur diameter | 2,35 mm |



Compatible con Sirio®, Silfradent®, Mariotti®, NSK®, Seashin® and Marathon®* control units.

| Product code | MX940 |
|----------------------|--------------|
| Micromotor handpiece | Brush |
| Maximum speed | 40.000 rpm |
| Power supply | 0-32 VDC |
| Handpiece length | 154,5 mm |
| Handpiece diameter | 29,4 mm |
| Handpiece weight | 282 gr |
| Bur diameter | 2,35 mm |



Compatible with brushless motor control units*.

| Product code | MX950 |
|----------------------|--------------|
| Micromotor handpiece | Brushless |
| Maximum speed | 50.000 rpm |
| Handpiece length | 162 mm |
| Handpiece diameter | 26 mm |
| Handpiece weight | 358 gr |
| Bur diameter | 2,35 mm |

* In some cases it may be necessary to change the micromotor handpiece connector.